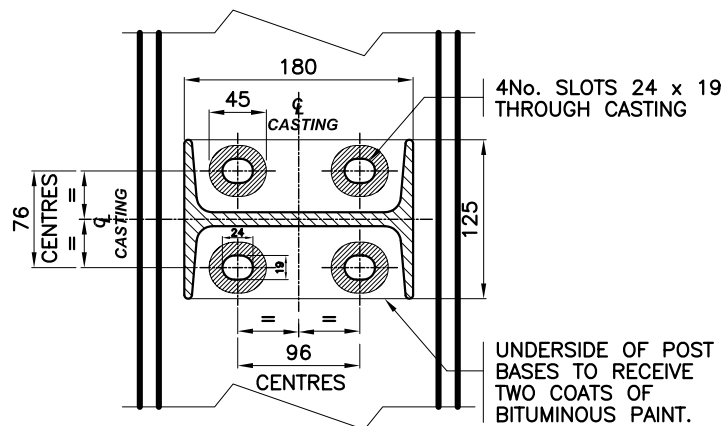
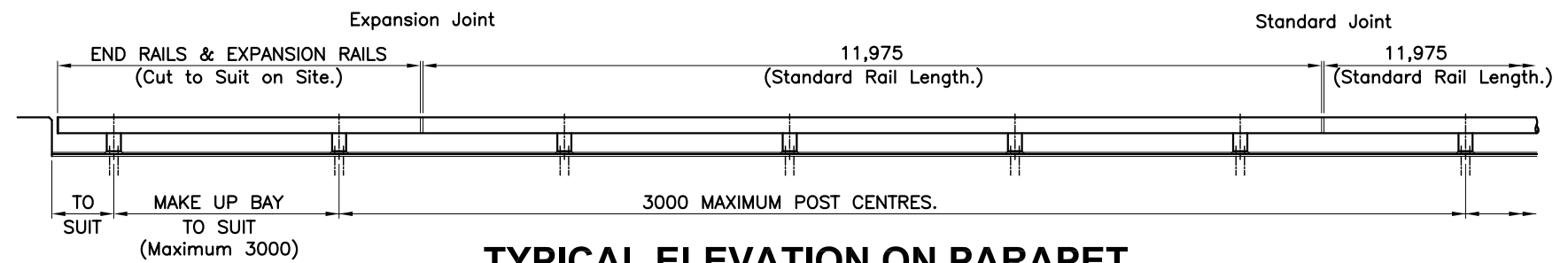


SECTION X - X

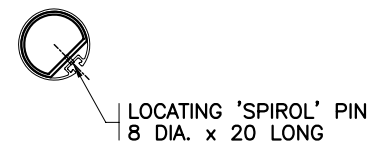


SECTION Y - Y

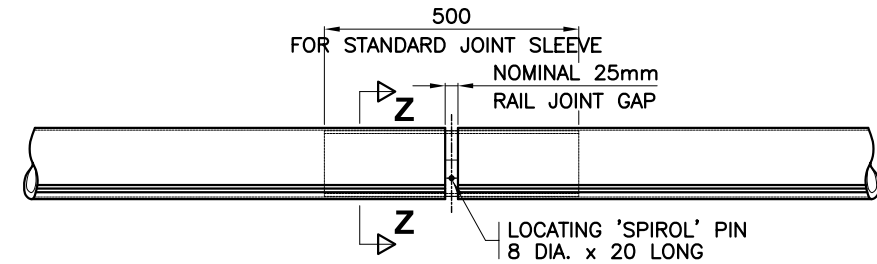
- ① RAIL SECTION (140 DIA)
- ② RAIL CLAMP BAR 120mm LONG WITH 2No. M12 THREADED HOLES THROUGH.
- ③ CAST POST.
- ④ M12x35mm LONG STAINLESS STEEL SET SCREWS TO BS.6105 GRADE A4 CLASS 80 C/W M12 STAINLESS STEEL PLAIN WASHERS FORM 'C' AND M12 STAINLESS STEEL SPRING WASHER TYPE 'B'.
- ⑤ HOLDING DOWN BOLTS ARE M16x70mm LONG HEXAGONAL HEAD STAINLESS STEEL SET SCREWS TO BS.6105 GRADE A4 CLASS 80 C/W M16 STAINLESS STEEL PLAIN WASHER FORM 'C' AND M16 POLYPROPYLENE "TOP HAT" WASHER FITTED BETWEEN TOP OF BASEPLATE AND UNDERSIDE OF STAINLESS STEEL WASHER.



TYPICAL ELEVATION ON PARAPET.



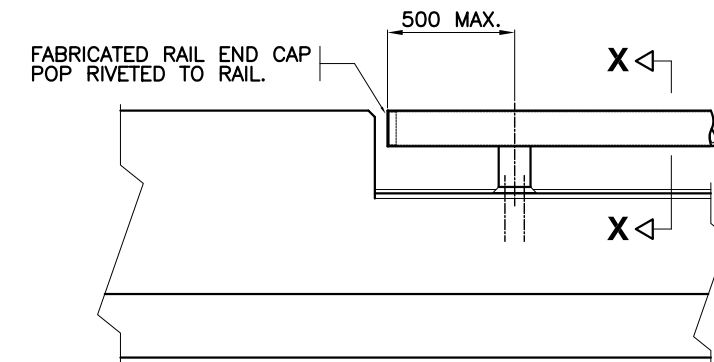
SECTION Z - Z



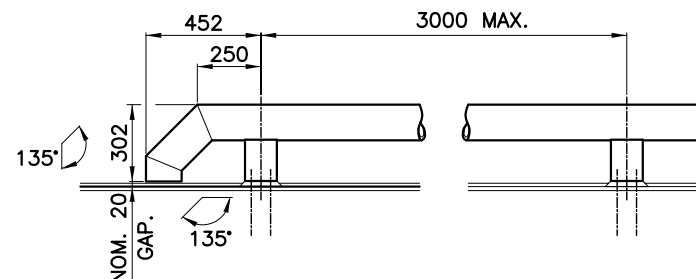
NOTE: FOR BRIDGE EXPANSION JOINTS UPTO 250mm EXPANSION JOINT SECTION LENGTH = 750mm LONG

DETAIL OF RAIL JOINT

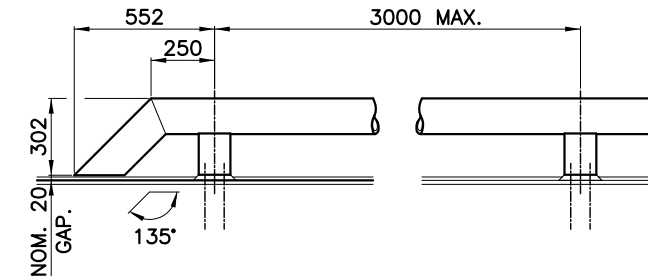
NOTES:
MATERIALS:
 CAST POSTS TO ALUMINIUM ASSOCIATION ALLOY A444-T4.
 ALL EXTRUDED SECTIONS TO ALUMINIUM ALLOY 6082 TF TO BS.1474.
 PLATES TO ALUMINIUM ALLOY 6082 TF TO BS.1470.
DESIGN:
 SYSTEM DESIGNED TO AASHTO SPECIFICATION FOR COMBINATION RAILING BUT WITH MODIFIED HEIGHT AND 50/3 kN HIGHWAY DESIGN LOADING.
SUPPLY:
 SUPPLY ANCHORAGE UNITS, 11,975m RAILS, CAST POSTS, STANDARD JOINT SLEEVES, SPECIAL EXPANSION JOINT SLEEVES (IF REQUIRED) AND END CAPS TO SUIT THE CONTRACTORS REQUIREMENTS.



DETAIL OF RAIL END AT ABUTMENT



ELEVATION AT 'SPECIAL RAIL END' ALTERNATIVE No.1.



ELEVATION AT 'SPECIAL RAIL END' ALTERNATIVE No.2.

Rev	Date	By	Description
A	FEB 02	R.S.	REDRAWN

MANUFACTURING TOLERANCES.
 TOLERANCES AS SHOWN UNLESS STATED OTHERWISE.

DIMENSIONS.	TOLERANCES.
GREATER THAN 1000mm.	± 2mm
LESS THAN 1000mm.	± 1mm
ANGULAR DIMENSIONS.	± 0°15'

SITE ERECTION TOLERANCES.
 WILL VARY TO SUIT SITE CONDITIONS.

ALL STANDARDS QUOTED ARE DEEMED CURRENT AT THE DATE THE DRAWING IS ISSUED FOR APPROVAL, UNLESS OTHERWISE STATED.

THIS DRAWING TO BE USED ONLY WITH
 W/O.No. _____

DRAWING TO BE RETURNED TO DRAWING OFFICE ON COMPLETION OF WORK.

MDS Barriers
 610 N. Mountain Rd
 Newington CT 06111
 Tel: 860-906-3390
 Fax: 860-289-8035
 e-mail: info@MDSbarriers.com

SCALE	DATE
	FEB 2002

DRN	CHK	R.A.C.
R.A.COOKE		

TITLE
 STANDARD DETAILS OF MDS-151A-VG
 SINGLE RAIL VEHICLE PARAPET

DRAWING NUMBER
 MDS-151A-VG