

**NOTES:**

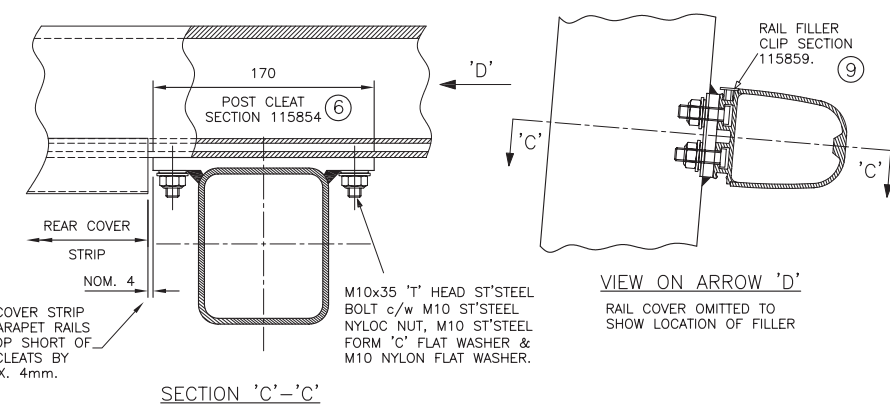
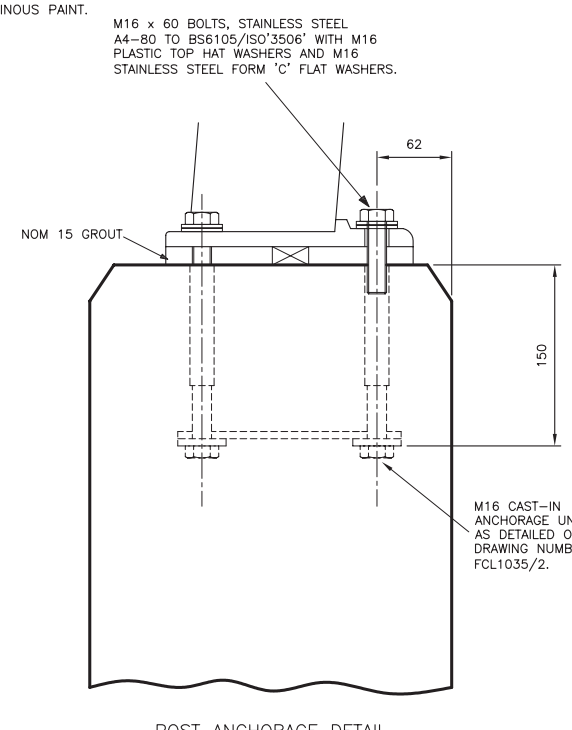
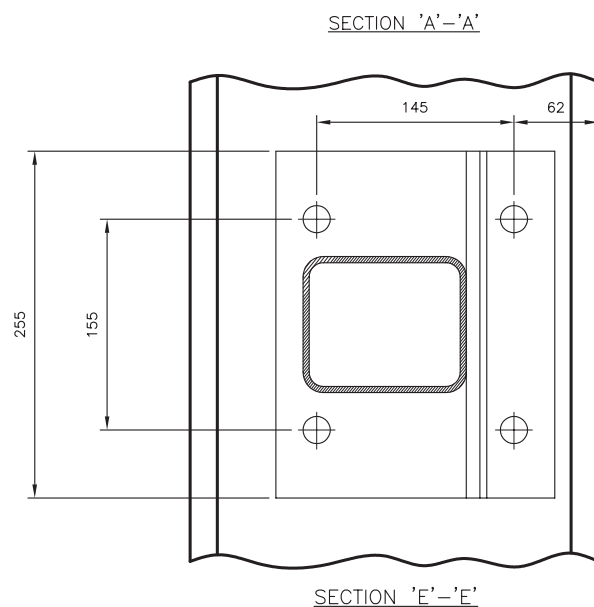
DESIGN SYSTEM DESIGNED AND DYNAMICALLY TESTED TO CONFORM TO DEPARTMENT OF TRANSPORT TECHNICAL MEMORANDUM BE.5. 'DESIGN OF HIGHWAY BRIDGE PARAPETS' FOR P1 APPLICATION. (THIRD REVISION NOV 1973)

**MATERIALS**

ALL EXTRUSIONS IN ALUMINIUM ALLOY 6082-T6 TO BS.1474. EXCEPT: REAR RAIL COVER TO 6005A-T6 JOINT PIN RETAINER AND RAIL FILLER CLIP TO 6063-T6.

**FINISH**

ALL ALUMINIUM TO BE SELF COLOUR / MILL FINISH.



Rev	Date	By	Description
B	04/07/13	CJB	ADDITIONAL INFORMATION ADDED.
A	17/08/12	SAR	DRAWING REVISED TO SUIT CUSTOMER SPECIFICATION RECEIVED VIA EMAIL DATED 17/08/12.

SECTION SCHEDULE	
1	MAIN RAIL SECTION 115856
2	RAIL JOINT SECTION 115855
3	INTERMEDIATE POST SECTION 115852
4	END POST SECTION 115853
5	BASE PLATE SECTION 115851
6	POST CLEAT SECTION 115854
7	RAIL REAR COVER STRIP SECTION 115857A
8	JOINT PIN RETAINER SECTION 115858
9	RAIL FILLER CLIP SECTION 115859

MANUFACTURING TOLERANCES.	
TOLERANCES AS SHOWN UNLESS STATED OTHERWISE.	
DIMENSIONS.	TOLERANCES.
GREATER THAN 1000mm.	± 2mm
LESS THAN 1000mm.	± 1mm
ANGULAR DIMENSIONS.	± 0°15'

SITE ERECTION TOLERANCES.	
NOTE: ALL ACCUMULATIVE TOLERANCES ARE TO BE CONTAINED WITHIN THE OVERALL TOLERANCE.	
WILL VARY TO SUIT SITE CONDITIONS.	

THIS DRAWING TO BE USED ONLY WITH	
W/O.No.	
DRAWING TO BE RETURNED TO DRAWING OFFICE ON COMPLETION OF WORK	

SCALE	DATE	06/08/2012
DRN.	S.A.R	CHK. C.B
TITLE		
STANDARD ARRANGMENT DRAWINGS OF MDS-250-VG TWO RAIL P1 PARAPET.		
DRAWING NUMBER		
MDS 250-VG. REV B		

MDS Barriers	
43 Franklin St	
East Hartford CT 06108	
Tel: 860-906-3390	
Fax: 860-289-8035	
e-mail: info@MDSbarriers.com	