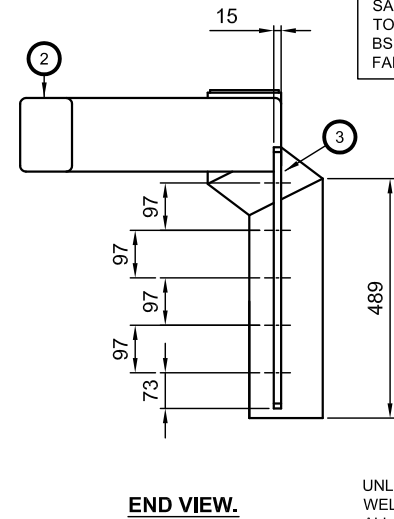
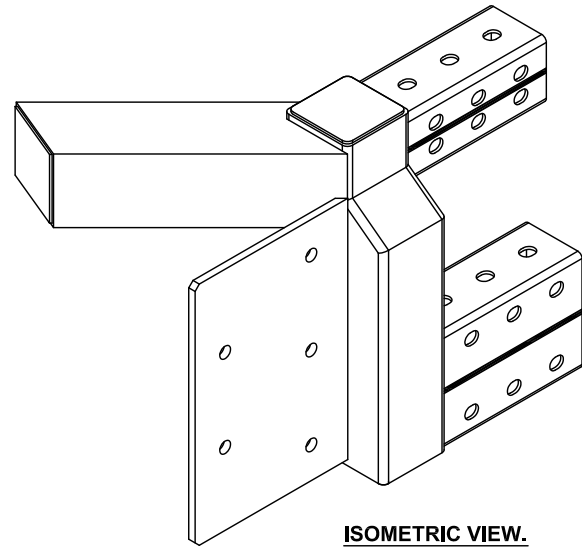
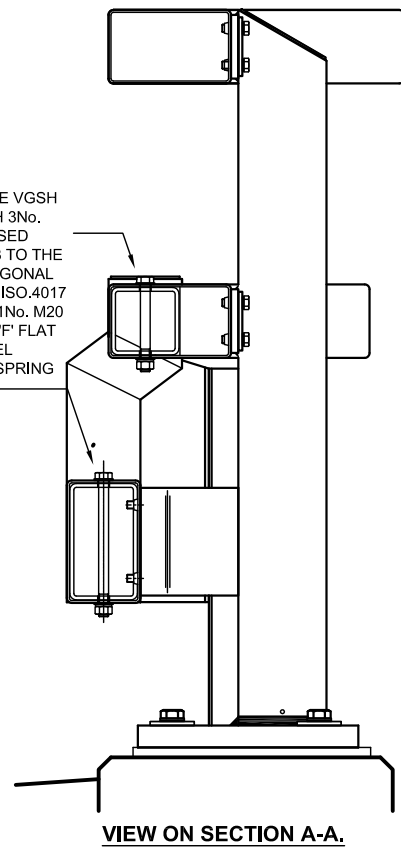
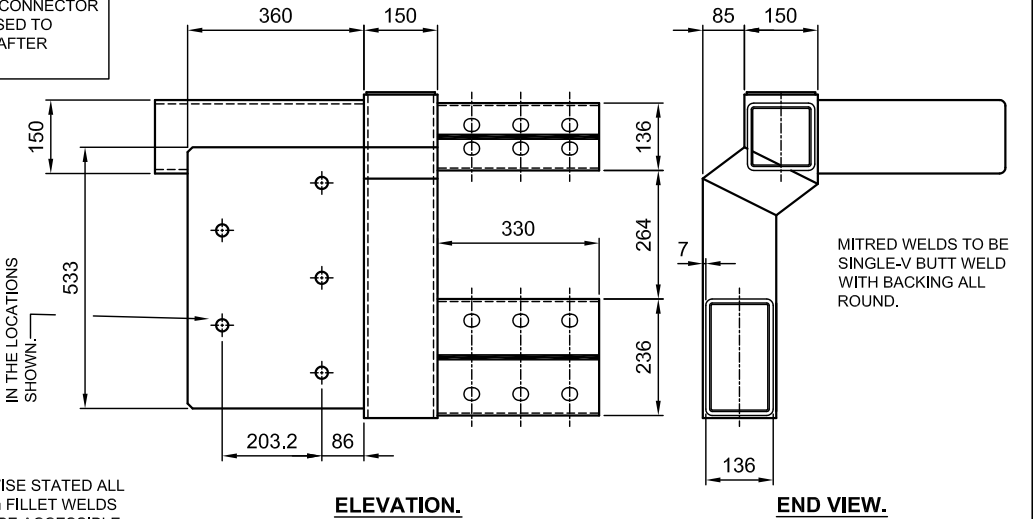


GUARDRAIL CONNECTOR ATTACHED TO THE VGSH 4000 SERIES STEEL PARAPET SYSTEM WITH 3No. M20x180 LONG HEXAGONAL HEAD GALVANISED STEEL BOLTS TO BS.EN.ISO.4017 GRADE 8.8 TO THE MIDDLE RAIL AND 3No. M20x280 LONG HEXAGONAL HEAD GALVANISED STEEL BOLTS TO BS.EN.ISO.4017 GRADE 8.8 TO THE BOTTOM RAIL BOTH c/w 1No. M20 HEXAGONAL NUT GRADE 8 AND 2No. FORM 'F' FLAT SPRING WASHERS TIGHTENED UNTIL THE SPRING WASHERS ARE FLAT.



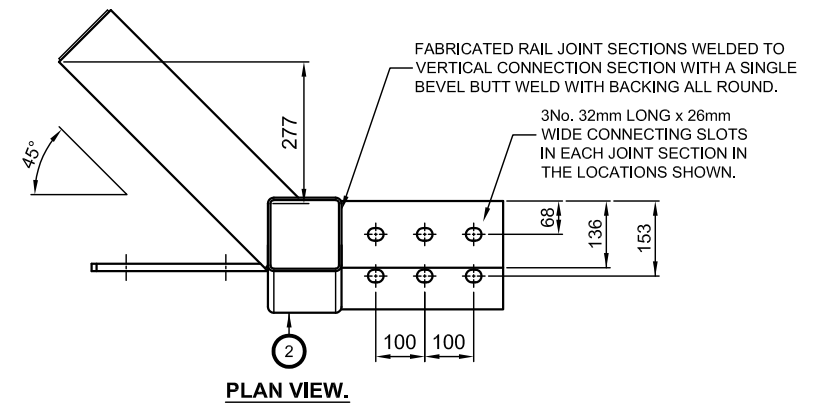
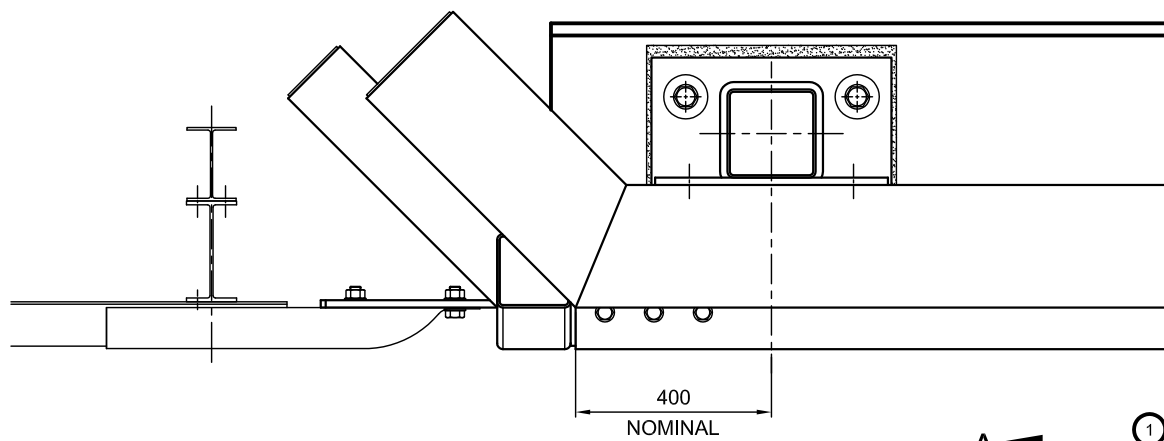
SAFETY FENCE CONNECTOR TO BE GALVANISED TO BS.EN.ISO.1461 AFTER FABRICATION.

5No. 1" DIAMETER HOLES IN THE LOCATIONS SHOWN.



MITRED WELDS TO BE SINGLE-V BUTT WELD WITH BACKING ALL ROUND.

UNLESS OTHERWISE STATED ALL WELD TO BE 5mm FILLET WELDS ALL ROUND WHERE ACCESSIBLE.

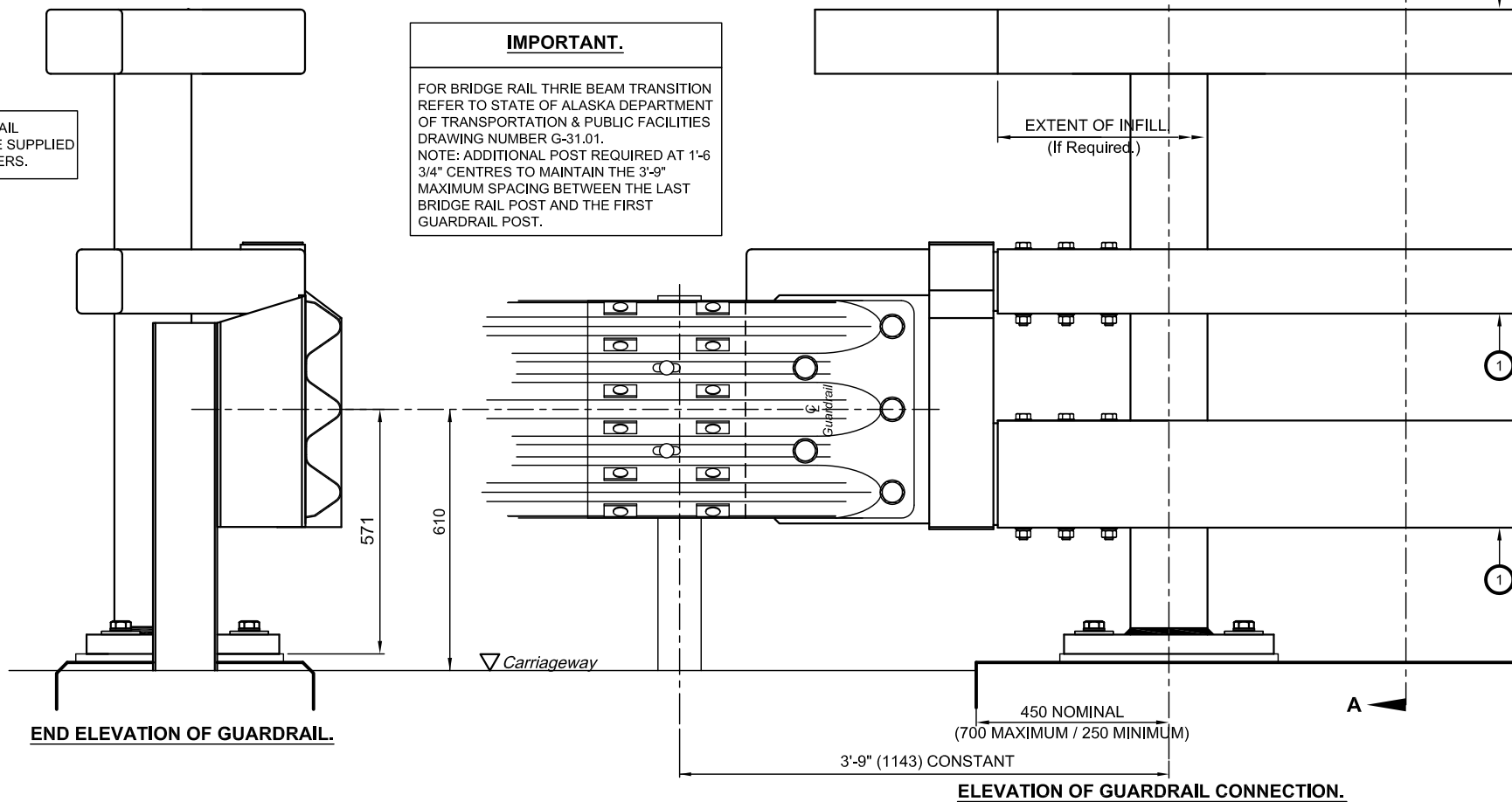


FABRICATED RAIL JOINT SECTIONS WELDED TO VERTICAL CONNECTION SECTION WITH A SINGLE BEVEL BUTT WELD WITH BACKING ALL ROUND.

3No. 32mm LONG x 26mm WIDE CONNECTING SLOTS IN EACH JOINT SECTION IN THE LOCATIONS SHOWN.

**IMPORTANT.**  
FOR BRIDGE RAIL THREE BEAM TRANSITION REFER TO STATE OF ALASKA DEPARTMENT OF TRANSPORTATION & PUBLIC FACILITIES DRAWING NUMBER G-31.01.  
NOTE: ADDITIONAL POST REQUIRED AT 1'-6 3/4" CENTRES TO MAINTAIN THE 3'-9" MAXIMUM SPACING BETWEEN THE LAST BRIDGE RAIL POST AND THE FIRST GUARDRAIL POST.

STANDARD GUARDRAIL COMPONENTS TO BE SUPPLIED AND FITTED BY OTHERS.



**NOTES:**

- 1/. TO BE READ IN CONJUNCTION WITH STATE OF ALASKA DEPARTMENT OF TRANSPORTATION & PUBLIC FACILITIES STANDARD DRAWINGS.
- 2/. GUARDRAIL TRANSITION CONNECTION BOLTS, NUTS AND WASHERS TO BE SUPPLIED AS PART OF THE GUARDRAIL.

Rev	Date	By	Description
MANUFACTURING TOLERANCES.			
TOLERANCES AS SHOWN UNLESS STATED OTHERWISE.			
DIMENSIONS.		TOLERANCES.	
GREATER THAN 1000mm.		± 2mm	
LESS THAN 1000mm.		± 1mm	
ANGULAR DIMENSIONS.		± 0°15'	

SECTION SCHEDULE	
1	MAIN RAIL SECTION 250x150x5.0 RHS.
2	VERTICAL CONNECTOR SECTION 150x150x8 SHS
3	CONNECTOR BACKING PLATE SECTION 533x360x15

NOTE: ALL ACCUMULATIVE TOLERANCES ARE TO BE CONTAINED WITHIN THE OVERALL TOLERANCE.

**SITE ERECTION TOLERANCES.**

WILL VARY TO SUIT SITE CONDITIONS.

ALL STANDARDS QUOTED ARE DEEMED CURRENT AT THE DATE THE DRAWING IS ISSUED FOR APPROVAL, UNLESS OTHERWISE STATED.

SCALE	DATE	12/07/2016
DRN. P.G.H.	CHK. D.V.C.	

THIS DRAWING TO BE USED ONLY WITH W/O.No. [ ]

DRAWING TO BE RETURNED TO DRAWING OFFICE ON COMPLETION OF WORK



MDS BARRIERS  
610 N. Mountain Rd  
Newington CT 06111  
Tel: 860-289-8033  
www.MDSBARRIERS.com

TITLE  
STANDARD ARRANGEMENT DRAWINGS OF VGSH 4000 SERIES STEEL PARAPET SYSTEM, CONNECTION INTO GUARDRAIL THREE BEAM TRANSITION.

DRAWING NUMBER  
**E7353-01.**