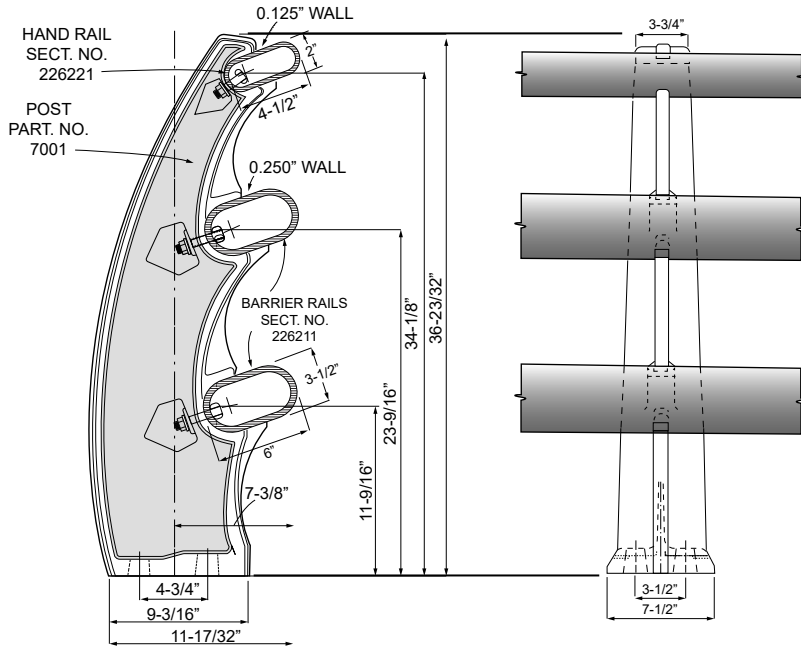


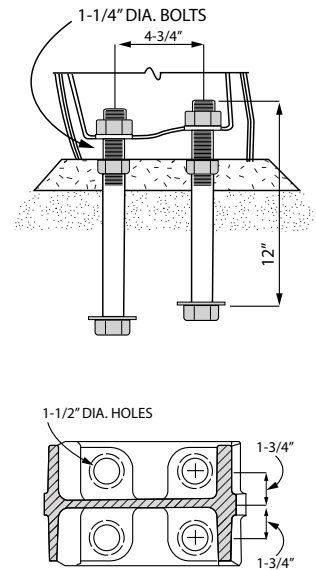


OREGON BRIDGE RAIL

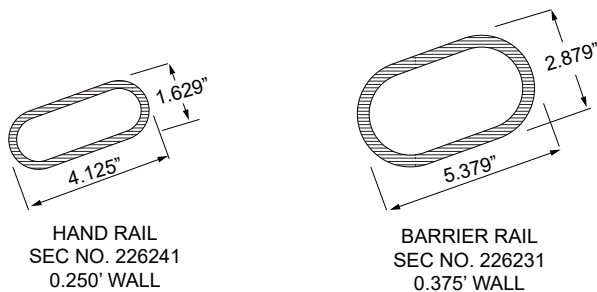
CAST POST
3-RAIL
No. MDS-7001-A



Anchor SYSTEM

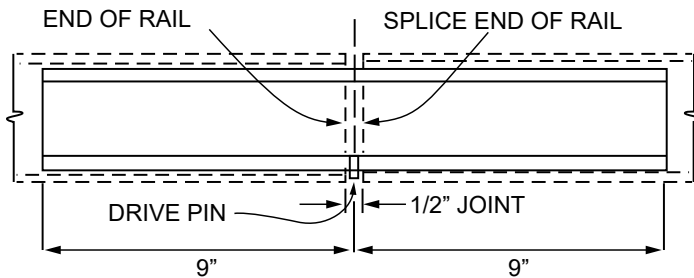


RAILS

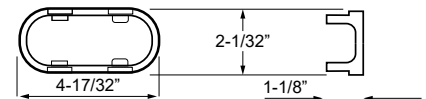


MATERIAL SPECIFICATIONS

Post: Permanent mold cast aluminum
A.S.T.M. B-108, alloy S7A-T4 (A344-T4)
Rail, rail splice: A.S.T.M. B221, alloy 6061-T6*
End cap: Cast aluminum A.S.T.M. B26 alloy
SG 70 A-F (356-F)
Rail to post hardware:
(3) Toggle bolt assembly, 1 per hand
rail-#8196, 3/8" dia.
Anchor hardware:
(4) 1-1/4" dia. X 12" long bolts with hexagon
nuts and washers.
A.S.T.M. A325 steel galvanized.
*6351-T5 is equal alternate per BPR I.M. March 1959.



HAND RAIL
PART No.
MDS-ECBA-45-2



BARRIER RAIL
PART No.
MDS-ECBA-6-3.5

