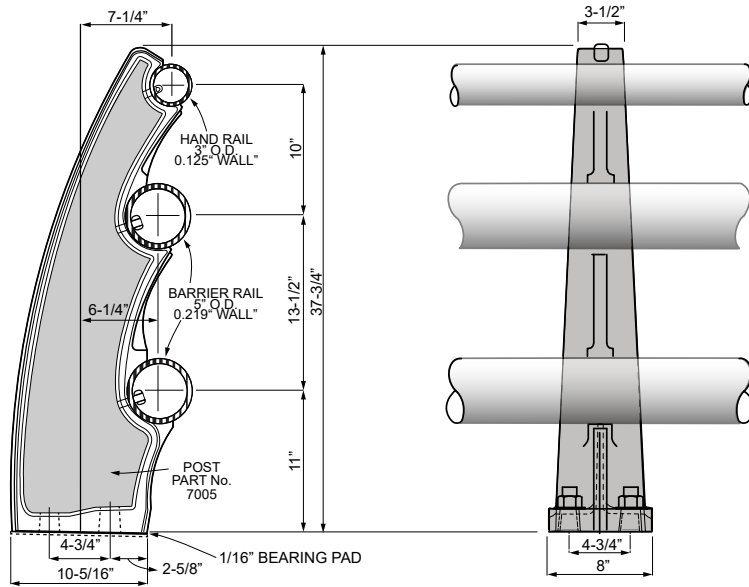


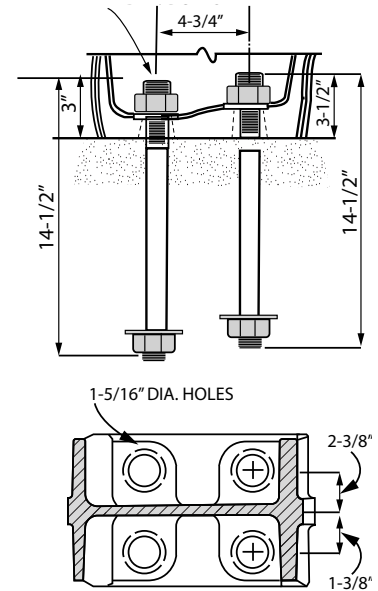


# VIRGINIA BRIDGE RAIL

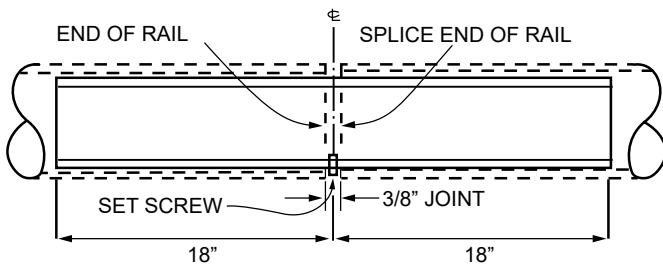
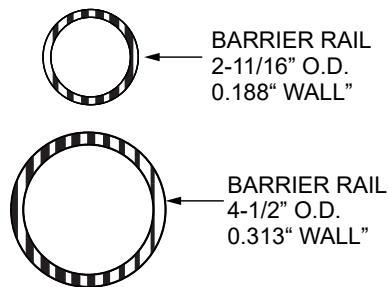
**CAST POST**  
**3-RAIL**  
**No. MDS-7005-A**



## Anchor SYSTEM



## RAILS



## MATERIAL SPECIFICATIONS

**Post:** Permanent mold cast aluminum  
A.S.T.M. B-108, alloy S7A-T4 (A344-T4)

**Rail and welded end cap plate:** A.S.T.M. B221 alloy 6061-T\*

**Rail splice:** A.S.T.M. B221, alloy 6061-T6\*

### Rail to post hardware:

- (1) Hand toggle assembly TB2--#8196, 5/16" diameter.
- (2) Barrier rail toggle bolt assembly TB1--8198, 1/2" diameter galvanized to A.S.T.M. A123 specifications

### Anchor hardware:

- (4) 1" dia. x 14-1/2" long A.S.T.M. A276 stainless steel bolts.
- (4) Standard hexagon nut--aluminum A.S.T.M. B211, 6262\*-T9.
- (4) Standard hexagon nut--A.S.T.M. A307
- (4) 2 x 2 x 1/2" steel washer, A.S.T.M. A307

**Base bearing pads:** 1/16" elastomeric pads.  
\*6351-T5 is equal alternate per BRP I.M. March 1969.